

AZtecFlex

Installation & Licensing Instructions



The Business of Science®

Revision History

Date	Version	Description of Revision	Author
March 2020	1.0	New Document	OINA
October 2020	1.1	Change to file locations	OINA
June 2021	1.2	AZtec 5.1 update	OINA
Sept 2021	2.0	AZtecFlex	OINA

Disclaimers

Oxford Instruments assumes no liability for the use of this document if any unauthorised changes to the content or format have been made.

Considerable care has been taken to ensure the accuracy of information contained but Oxford Instruments NanoAnalysis cannot guarantee that it contains no errors, omissions or inaccuracies. In addition the Oxford Instruments NanoAnalysis policy is one of continued product improvement. Therefore, the company reserves the right to change the information contained herein without notice.

This manual is provided without warranty of any kind, either implied or expressed, including, but not limited to, the implied warranties of merchantability and fitness for a particular purpose.

Copyright

Information contained in this document is proprietary, and remains the intellectual property of Oxford Instruments NanoAnalysis.

The document is distributed by Oxford Instruments NanoAnalysis on the understanding that anyone entrusted with the document will use their best endeavours to prevent the disclosure of such confidential information to any third parties without written consent from Oxford Instruments NanoAnalysis. No part of this document may be copied, transmitted or reproduced in any form, or by any other means, without written consent from Oxford Instruments NanoAnalysis.

NanoAnalysis

Halifax Road
High Wycombe
HP12 3SE UK

Tel: +44 (0) 1494 442255

Fax: +44 (0) 1494 524129

Email: nanoanalysis@oxinst.com
www.oxford-instruments.com

Contents

1. About AZtecFlex.....	4
1.1 Summary of Installing and Activating AZtecFlex.....	4
1.2 Downloading AZtec.....	5
2. Installing AZtec	6
3. Activation	8
4. Licensing AZtecFlex	13
5. Removing the Flex License	15
6. Running AZtec	16

1

About AZtecFlex

AZtecFlex grants the user a time-limited license to work with an offline version of AZtec. Offline means on a computer not connected to a microscope (**Warning:** installing a AZtecFlex license on a computer connected to a microscope will prevent data acquisition). The license provided works with all versions of AZtec from 3.2. The license provided offers access to most offline AZtec functionality for the specified techniques, except for certain features that are dependent on third party licenses, for example EBSD pattern reprocessing.

AZtec will open project files from previous versions of AZtec, but projects saved in the newer version AZtec will no longer be readable with earlier versions of AZtec. For this reason, it is essential that projects should be copied and saved before opening with the latest version of AZtec, if required to be opened on previous versions.

Note: The AZtec installer downloaded **must not** be installed on the microscope acquisition computer. Oxford Instruments NanoAnalysis systems are complex and any hardware or software incompatibility encountered may require a chargeable service visit to resolve.

Note: If you were using a network license **BEFORE** using the Flex license **AND** you return to your network license **WITHOUT** deleting the **.v2c** file, then your network license **WILL NOT** work

1.1 Summary of Installing and Activating AZtecFlex

The recommended order is:

- Download and install latest version of AZtec
- Activate Licenses (if AZtec is not installed on the same PC, your browser may ask you to install additional content)
- Attach licenses to Aztec

Note: Prior to using the AZtecFlex, you will have received an email which contains a **single use** license activation code (LAC) and a download link for AZtec. This code is required to create a license, the created licenses is locked to a single PC.

Note: The AZtecFlex license **must not** be used on a computer connected to a microscope, this license will **disable** AZtec's ability to acquire data.

1.2 Downloading AZtec

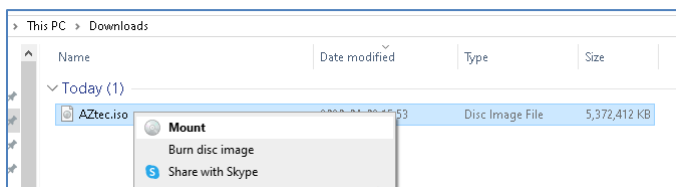
A download link for the current version of AZtec is provided in the e-mail with the license's information. A new link will be sent via e-mail to all register AZtecFlex users with a valid license.

2

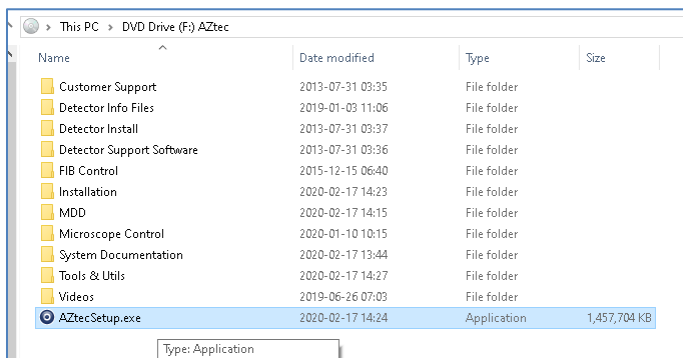
Installing AZtec

Note: The user account requires Administration rights to install AZtec software.

If you are using physical installation media, please insert it into your PC's optical drive. If you have downloaded the AZtec.iso, please locate it and mount the image. In Windows 10, this can be done by right-clicking the file and selecting 'Mount'.

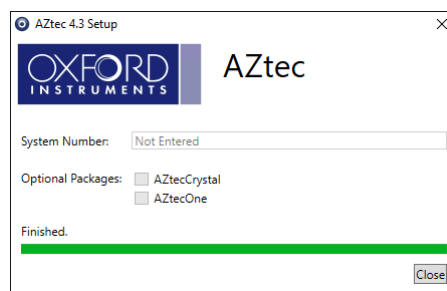
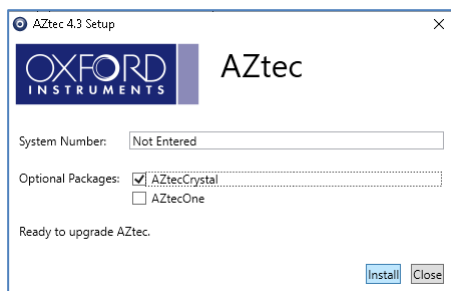


Once the media is inserted, or mounted, please navigate to the drive marked as 'AZtec' and run AZtecSetup.exe.



AZtecSetup will present you with a license agreement and some optional packages you may wish to install. Please tick the options required and then click 'Install'. Optional package AZtecOne is a light version of AZtec and required licenses are not included with AZtecFlex. Optional package AZtecCrystal is EBSD post processing software and licensed with some versions (at present the license is included with AZtecFlex EDS, WDS and EBSD and AZtecFlex student, see product page for current license information) of AZtecFlex.

AZtecsetup will ask for a system number, enter "FLEX" in this field.

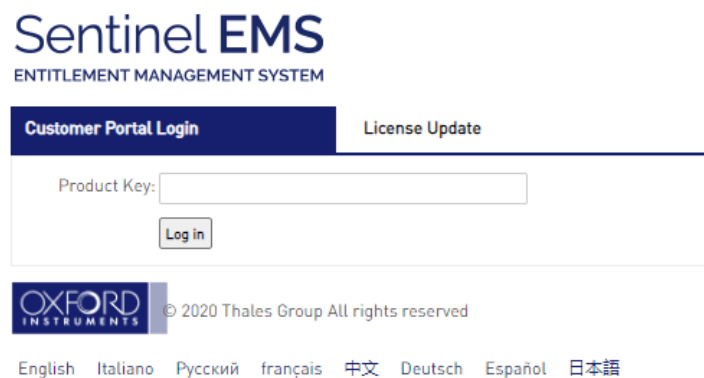


Once the installation has completed successfully you will be presented with a complete progress bar and the message 'Finished'. Then click 'Close' to finish installation.

3

Activating An AZtecFlex License

To activate you licenses you must proceed the EMS website (activation link, in e-mail containing you license) via an internet enabled PC. Enter the LAC in the product key field and click Log in.



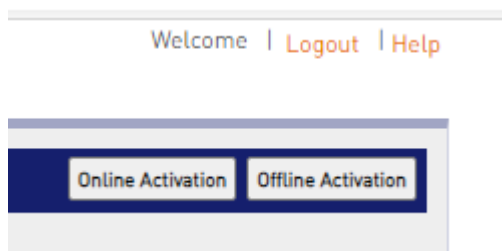
The screenshot shows the Sentinel EMS (Entitlement Management System) website. At the top, it says "Sentinel EMS ENTITLEMENT MANAGEMENT SYSTEM". Below this, there are two tabs: "Customer Portal Login" (which is selected) and "License Update". The "Customer Portal Login" tab contains a "Product Key:" label followed by a text input field and a "Log in" button. At the bottom of the page, there is the Oxford Instruments logo, the copyright notice "© 2020 Thales Group All rights reserved", and a language selection menu with options: English, Italiano, Русский, français, 中文, Deutsch, Español, and 日本語.

Once logged in, details of you license will be displayed. There are two options for activating the AZtecFlex licenses, online and offline. Online activation will lock the license to the PC used for activation, offline activation will lock the license to a PC specified at point of activation.

3.1 Online Activation

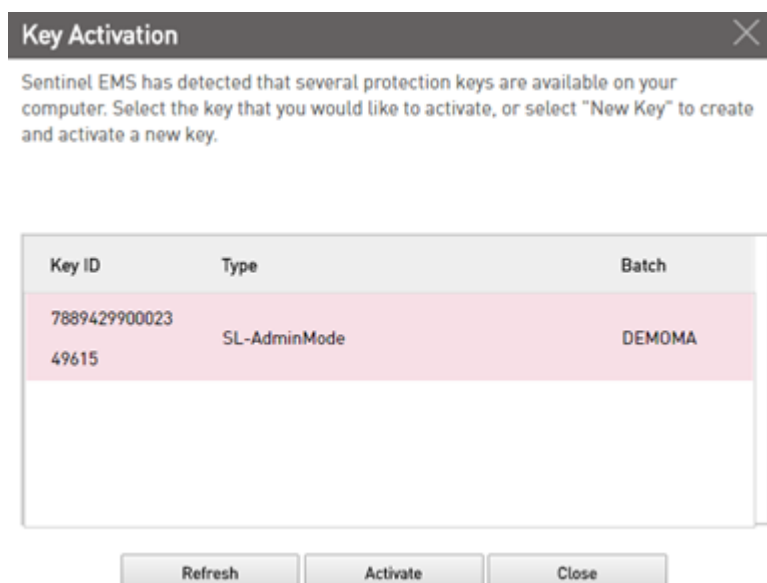
Step 1. Click **Online Activation**.

Note: Note if you are asked to install a newer version of RTE after clicking online activation you will need to use the offline activation method. The RTE is installed as part of the AZtec installation process.

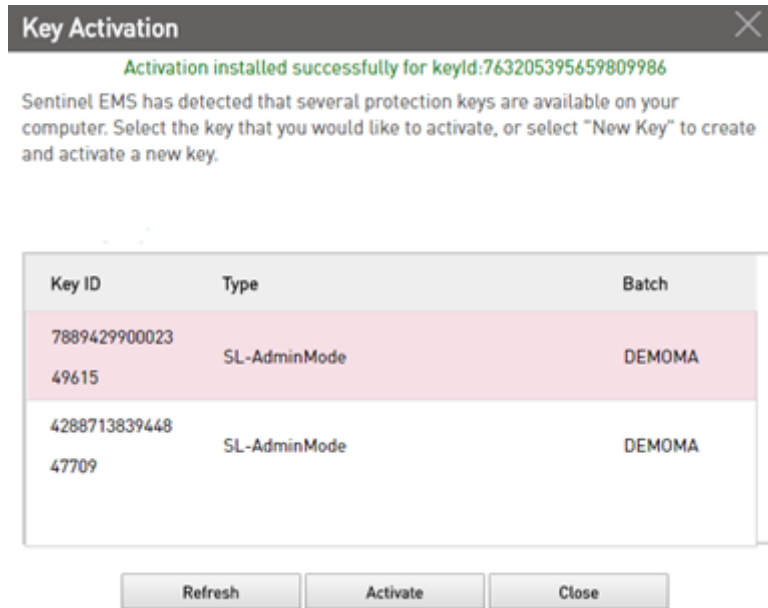


Note: If there is no pre-existing Key ID on your machine, skip to step 4.

Step 2. On the **Key Activation** pop-up window, select the Key ID that you want to update.



Step 3. Click **Activate**. The system processes the license information and displays a success message along with a Key ID.

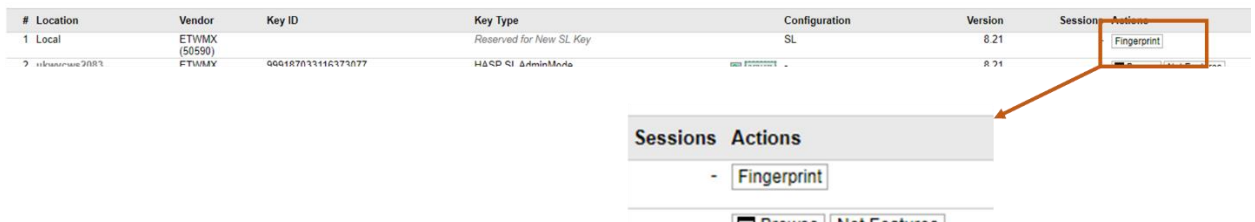


Step 4. Click **Close**.

3.2 Offline Activation

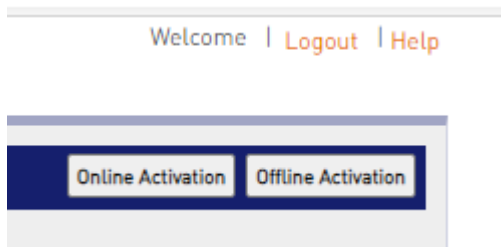
Prior to using offline activation, you will need to generate a C2V file from the target PC. To create a C2V file, you will need to:

- Install AZtec
- Open License manger, (start menu -> OI NanoAnalysis Tools -> License manger)
- Select "Sentinel Keys" from the menu on the right
- Click "Fingerprint"
 - This will trigger a download of the C2V file
 - If a license is present on the computer, the fingerprint button is replaced with a button labelled C2V. This license will need removing to fingerprint the PC

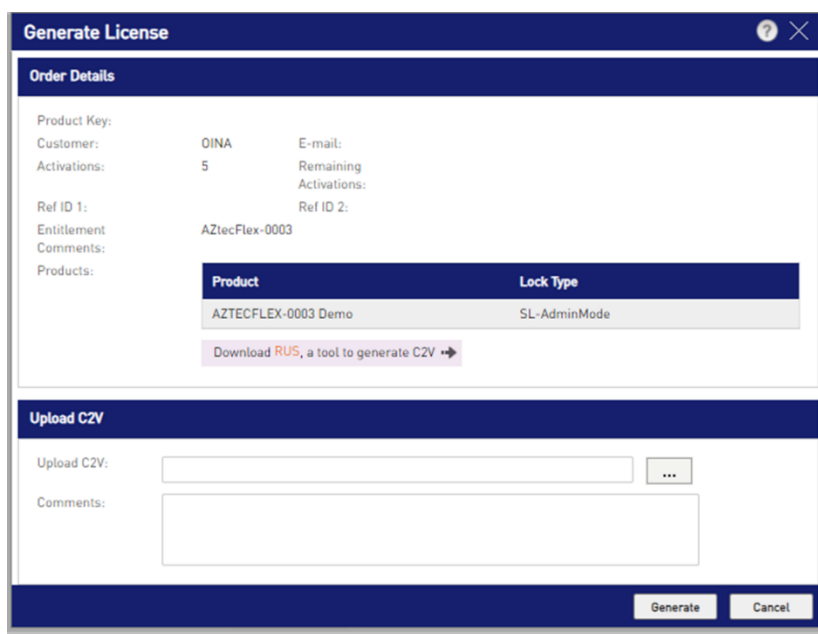


Note: The C2V file will need transferring to the PC been used for activation

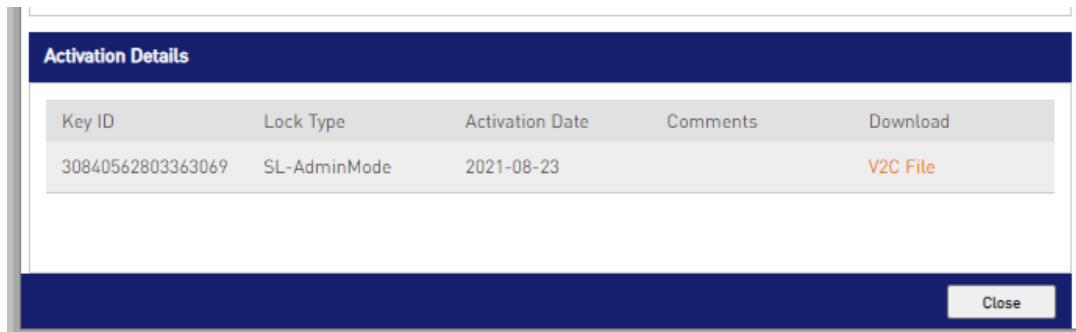
Click **Offline Activation**.



Upload the C2V file in the upload section.



Click generate, this will e-mail a V2C license file (not to be confused with the C2V file) to the registered user. You can also download the V2C file by clicking the download link under the activation details. To apply the license, see section 4.

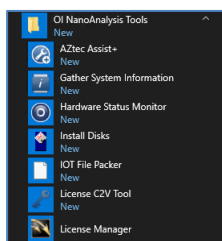




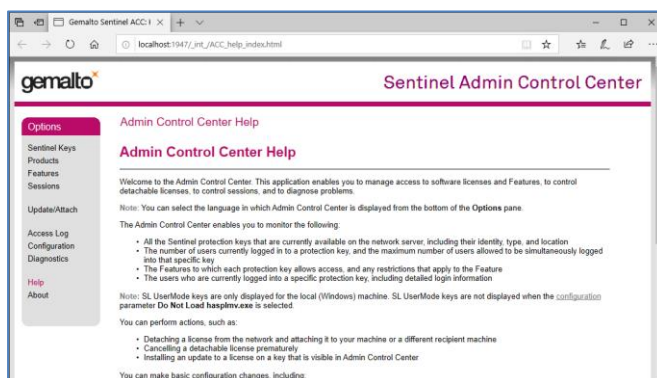
4

Applying An AZtecFlex License

To license your new AZtec installation, please click on the Start Menu and select 'License Manager' within the OI Nanoanalysis folder.

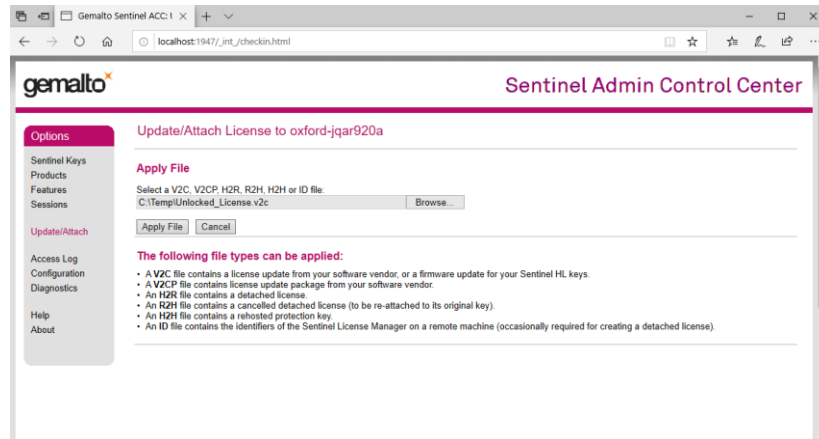


This will open the 'Sentinel Admin Control Center,' from which your licenses can be managed.

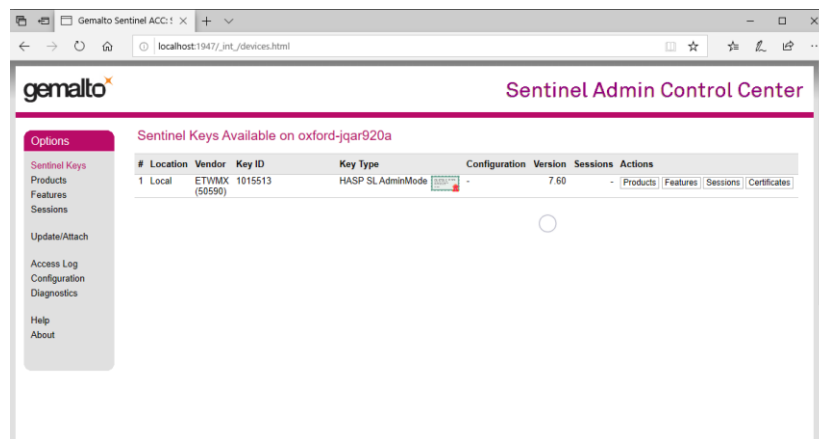


From the Sentinel Admin Control Center please select the 'Update/Attach' link.

Click the 'Browse' button and select the .v2c license file you have generated by following the steps in Section 3', then click 'Apply File'. Note that this can take a minute to update.



You can check your Flex license has been applied by clicking the 'Sentinel Keys' link and observing that a Local key of type 'HASP SL AdminMode' is present. Once the license is present, the Sentinel Admin Control Center can be closed.

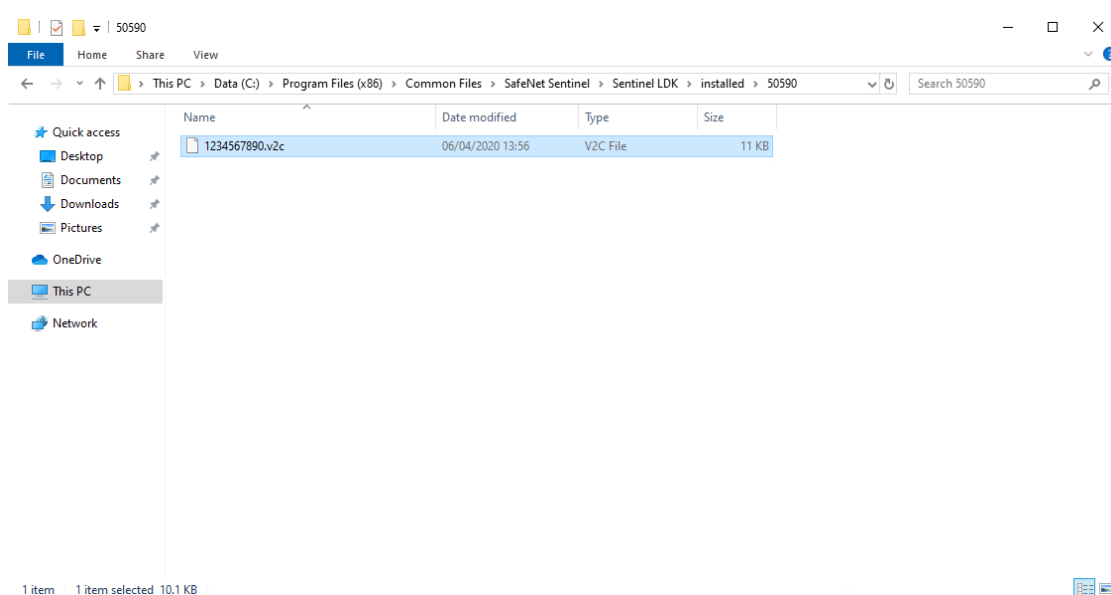


5

Removing the Flex License

If the Flex license has expired, or you no longer have a need for it, it can be removed from an installation as follows:

Navigate to 'C:\Program Files (x86)\Common Files\SafeNet Sentinel\Sentinel LDK\installed\50590'



Delete the **.v2c** file and restart your PC.

Note: If you were using a network license **BEFORE** using the Flex license **AND** you return to your network license **WITHOUT** deleting the **.v2c** file, then your network license **WILL NOT** work.

6

Running AZtec

AZtec can be run from the AZtec desktop shortcut:



Or from the AZtec entry in the OI NanoAnalysis folder of the Start Menu:

